



# blaugelb Multifunctional Tape Trio**SDL**<sup>600</sup>

Sealing of all 3 levels of the connecting joint  
with only one product.

**Efficient sealing** through  
simple and fast processing.



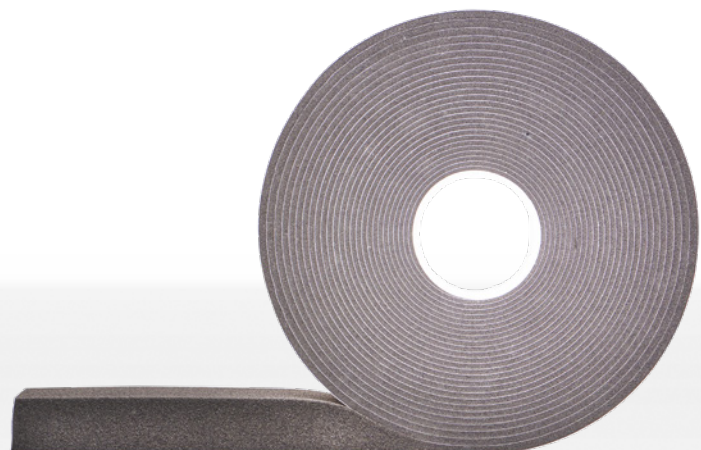


**blaugelb**

# Multifunctional Tape Trio**SDL**<sup>600</sup>

## **Contents:**

The building shell and the climate	04
Stricter legal requirements	05
The consequence: stress	06
The blaugelb Multifunctional Tape Trio <b>SDL</b> <sup>600</sup> as a stress killer	08
What makes the blaugelb Multifunctional Tape Trio <b>SDL</b> <sup>600</sup> a success	09
The technical regulations DIN 18542	09
The product features	10
Adapted to the 3-level model of the connecting joint	11
Efficient processing	12
Safety, functionality and creative freedom	13
Large functional areas of the blaugelb Multifunctional Tape Trio <b>SDL</b> <sup>600</sup>	14
Large roll lengths of the blaugelb Multifunctional Tape Trio <b>SDL</b> <sup>600</sup>	14
Compatible with the blaugelb systems	15
Sustainability and health	16
Article overview	17



## The building shell and the climate

The building shell includes the components and the outer skin of a building. It can be considered the building's "all-weather protective jacket". The building shell is breached by openings such as windows and exterior doors, flues and lines. It is precisely these connection points that are the trouble spots on the building that require particular attention.

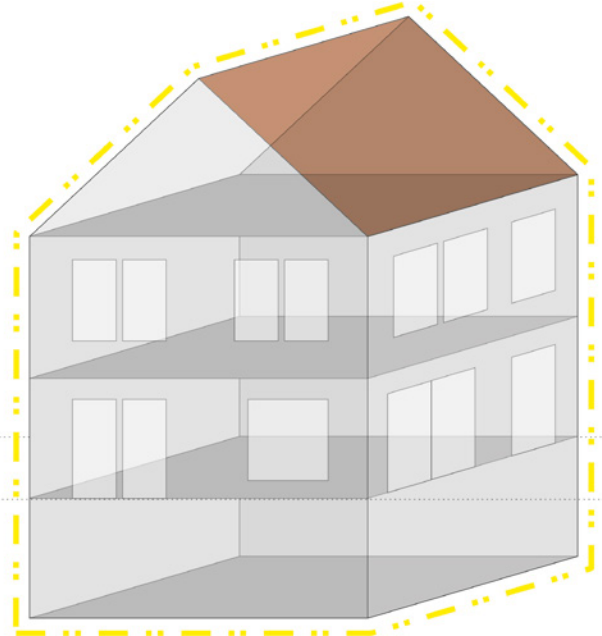
Not only do various work sections converge here in the building phase, the requirements and loads are also highest here in the use phase.

Since the 1980s, focus has increasingly been placed on the building shell under technical aspects with the goal of making the building shell more leaktight in order to lower heating costs.

Climate change is now a reality. Extreme weather phenomena are occurring more frequently and affect the building shell. To limit the associated temperature increase, reducing emissions of the greenhouse gas CO<sub>2</sub> has now become mandatory.

In addition, there have recently been stricter legal provisions for achieving political climate goals that have an additional impact on the building shell.

Fig. Schematic drawing of a home with classic layout – cellar, ground floor and one upper floor.



Is climate change already here?



### Stricter legal requirements

To achieve the set climate goals, the requirements for energy conservation are growing ever stricter. The latest standards for Germany are set by the German "Building Energy Law" (GEG), which took full effect on November 1, 2020.

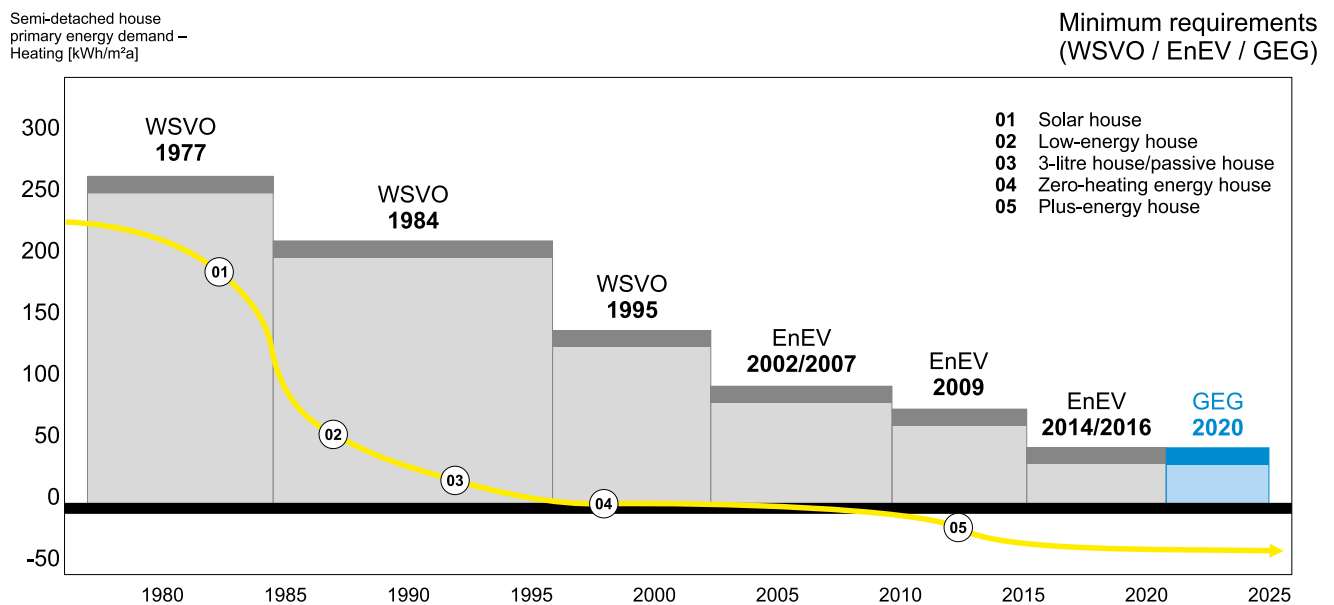
It combines the previous body of laws for energy conservation in Germany and implements the European specifications on the energy performance of buildings (Building Directive (EU) 2018/844).

The Building Energy Law (GEG) codifies the nearly zero-energy building (NZEB). This standard has been prescribed for the construction of

new public buildings since 2019 and for all other new buildings since the end of 2020.

The GEG requirement must also be implemented accordingly for the large-scale renovation of old buildings. Passive houses can also achieve this "nearly zero-energy demand" standard and are sure to become the house of the future.

The contractor is now obliged to provide the client with verification of the airtightness of the building shell. Airtightness is also one of the most important demands on passive houses.



The German government has enacted the Climate Action Plan 2050 for Germany in order to accelerate achievement of the climate goals. The plan strives to achieve the goal of CO2 neutrality for Germany before 2045 (instead of 2050).

In this context, the new German Climate Protection Act (KSG) was passed in 2021.

This splits up the CO2 savings into stage goals. For example, by 2030 CO2 emissions are to be reduced by 65 % compared to the level from 1990. By 2040 this reduction should be 88 %.

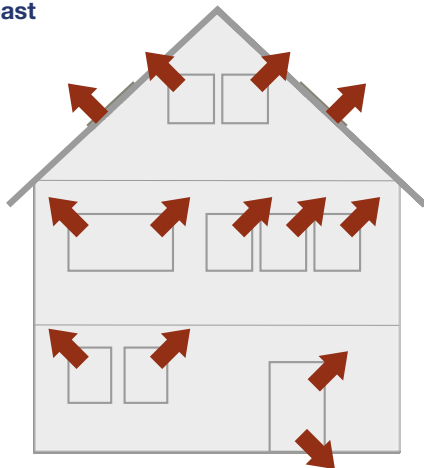
The legal provisions for building energy consumption will also become increasingly more strict in future.

The consequence: stress

The external loads that are placed on the building shell are further increased by the climate development. At the same time, the technical requirements are increased due to the legal energy saving provisions. The entire building shell is thus under increasingly more stress.

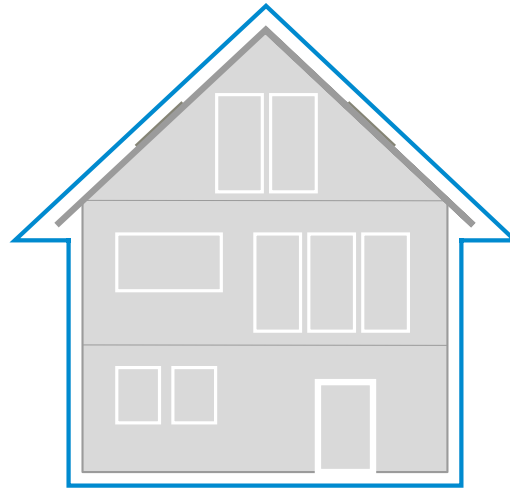
It must become tighter to air, wind, water and dust and should also provide increasingly improved insulation to prevent thermal losses and the transmission of noise.

in the past



Slow construction  
High air exchange rate / leaky  
Low humidity  
High ventilation heat losses

today



Fast construction  
Low air exchange rate / tight  
High humidity  
EnEV and energy certificate, GEG

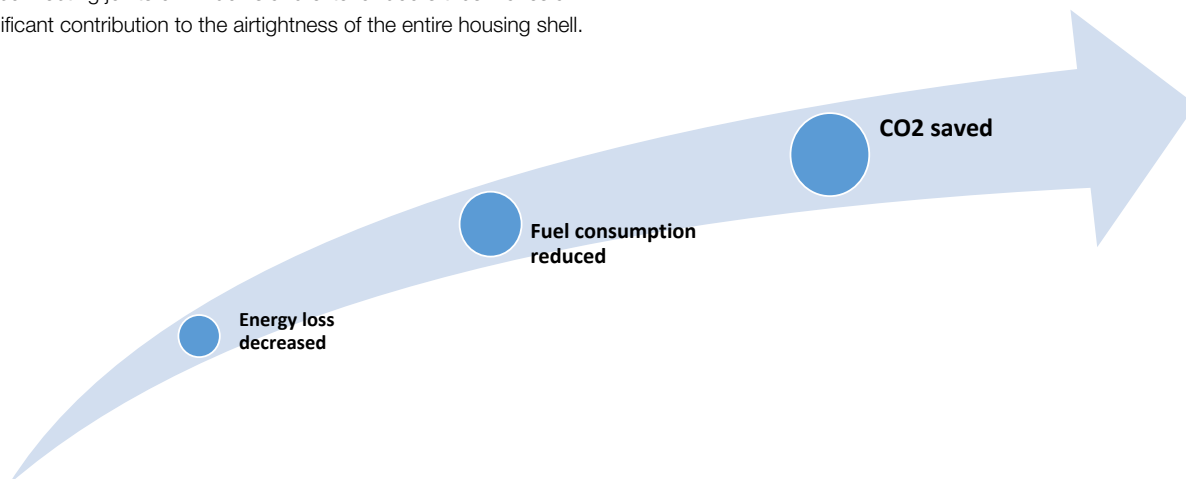
The airtight housing shell is a mandatory legal provision due to the GEG. The shell having maximum airtightness is the prerequisite for

- lowering the loss of energy
- significantly reducing the consumption of fossil fuels for the generation of heating energy
- and reducing CO<sub>2</sub> emissions.

This makes it even more crucial that the sealing products used there have maximum airtightness. The requirements for planning and executing the sealing are thus extremely high.

This also means more work and thus more stress for planners, architects and contractors.

Depending on the object, about 25 % of the surface of the housing shell is replaced by windows and exterior doors. The airtightness of the connecting joints of windows and exterior doors thus makes a significant contribution to the airtightness of the entire housing shell.





## Your verifiable statics.

We will help you compile the documents required to produce verifiable statics.

01

### Preparation of drawings

Where necessary, we will help you create drawing packages for factory and installation planning.

As well as elevation drawings incl. attachment points, we also produce the detail drawings for the upper, side and lower window connections.

02

### Inspection of your documents

On request, we will inspect the documents you need to submit for the statics evidence for completeness and plausibility.

This is where our many years of experience will help us optimise the process so it runs smoothly.

03

### Provision of values

The rated resistances form the basis for preparation of the statics.

We will provide your structural engineer with all the relevant rated resistances for our systems.

04

### Contact with the structural engineer

We will be happy to put you in touch with an expert structural engineer.

If you want, we will also act as your point of contact with the structural engineer.

Just ask us.

The bottom line? It's a great service\*.



Interested in our services?

[serviceleistung@meesenburg.de](mailto:serviceleistung@meesenburg.de)



\* The services may be subject to a cost, depending on their extent. We would be happy to advise you in advance.

The blaugelb Multifunctional Tape TrioSDL<sup>600</sup> as a stress killer

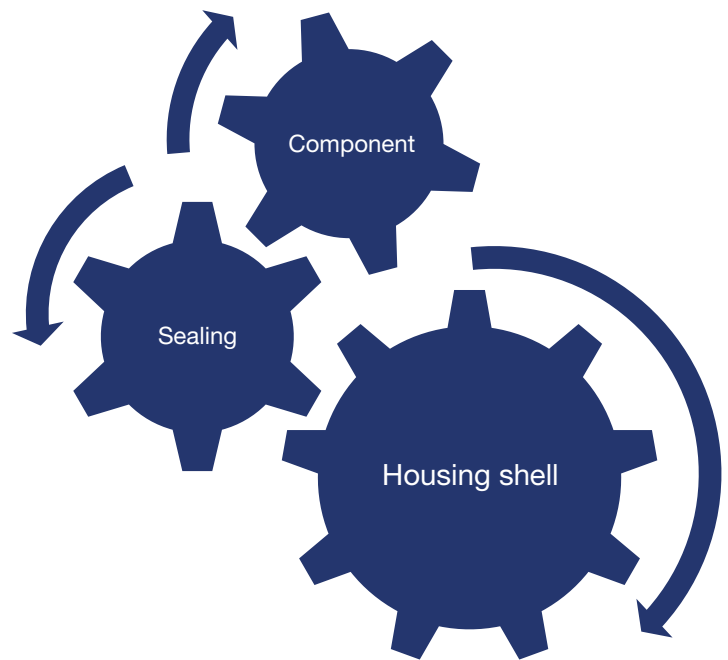
There is no need to be nervous about the GEG, however. The sealing in the connecting joint can be easily planned, with no stress, and executed accordingly – with the blaugelb Multifunctional Tape TrioSDL<sup>600</sup>.

It meets the requirements for sealing from all modern building energy standards:

- Passive houses
- KfW 40 efficiency houses
- Zero-energy houses
- Plus-energy houses
- Nearly zero-energy buildings (NZEB) according to the GEG
- And many more

It's a familiar situation from sports or the world of work: In a team, only the optimum interaction of all team members can ensure success. If the actions of each individual mesh with each other like on a gear train, the desired outcome is achieved.

In this case, the team members are the components and the sealing products and the success is achieving an airtight housing shell.



**The blaugelb Multifunctional Tape TrioSDL<sup>600</sup>.**

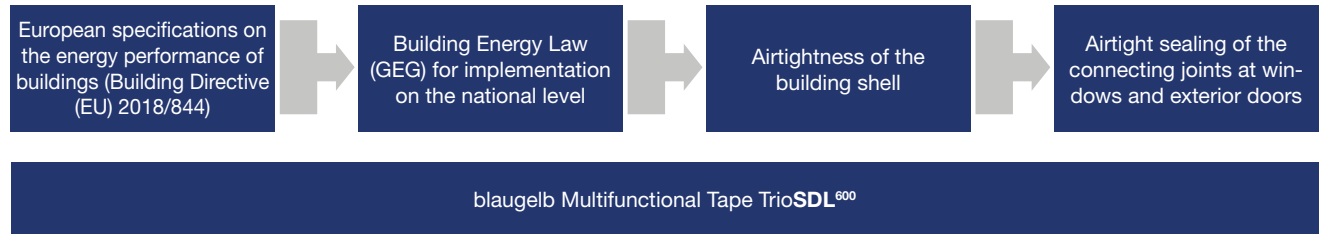
Sealing of all 3 levels of the connecting joint with only one product.





## What makes the blaugelb Multifunctional Tape TrioSDL<sup>600</sup> a success

The approach for the legal requirements:



The specifications for energy conservation at the European level were integrated into national legislation by means of the Building Energy Law. This specifies the airtightness of the building shell, including the joints.

With the blaugelb Multifunctional Tape TrioSDL<sup>600</sup>, the legal requirements are met professionally, safely and compliantly. And planners and processors are thus on the safe side.

## The technical regulations DIN 18542

The legal framework provides the foundation for the construction project. Other influencing factors also affect the individual construction products, however – the standards and technical provisions.

DIN 18542 is one of the most important standards for pre-compressed sealing tapes and multifunctional tapes. It is a product and test standard, meaning it describes the required properties of the products and the methods for testing them. The product features defined by the standard include 11 criteria, including the determination of the airtightness for these products – which is important for achieving an airtight building shell. The requirements are split up into so-called stress groups (BG) here.

Multifunctional tapes perform sealing of the entire connecting joint with only one product. To effect this performance, either BG 1 or BG 2 must be met and verified in combination with BG R. Pre-compressed sealing tapes do not cover all levels of the connecting joint, meaning it is not necessary for them to satisfy the requirement BG R.

DIN 18542 is valid simultaneously with the GEG. It is important to note here that the GEG itself does not specify which sealing products can be used to achieve airtightness in accordance with the GEG.

blaugelb Multifunctional Tape TrioSDL<sup>600</sup> meets the stress groups BG 1 and BG R of DIN 18542, thus verifying suitability for sealing of the connecting joint with just one product.

Existing stress groups:



## The product features

The blaugelb Multifunctional Tape Trio**SDL**<sup>600</sup> is a pre-compressed 3-level sealing tape based on a special impregnated PU foam.

The abbreviation **SDL**<sup>600</sup> stands for the following properties:

- S**chlagregendicht i.e. Watertight against driving rain over 600 Pascal and weather-resistant (BG 1 tested) on the outside
- D**ämmung i.e. Insulation against sound and heat in the functional level
- L**uftdicht i.e. Airtight and forms a barrier against vapour on the room side (BG R tested)

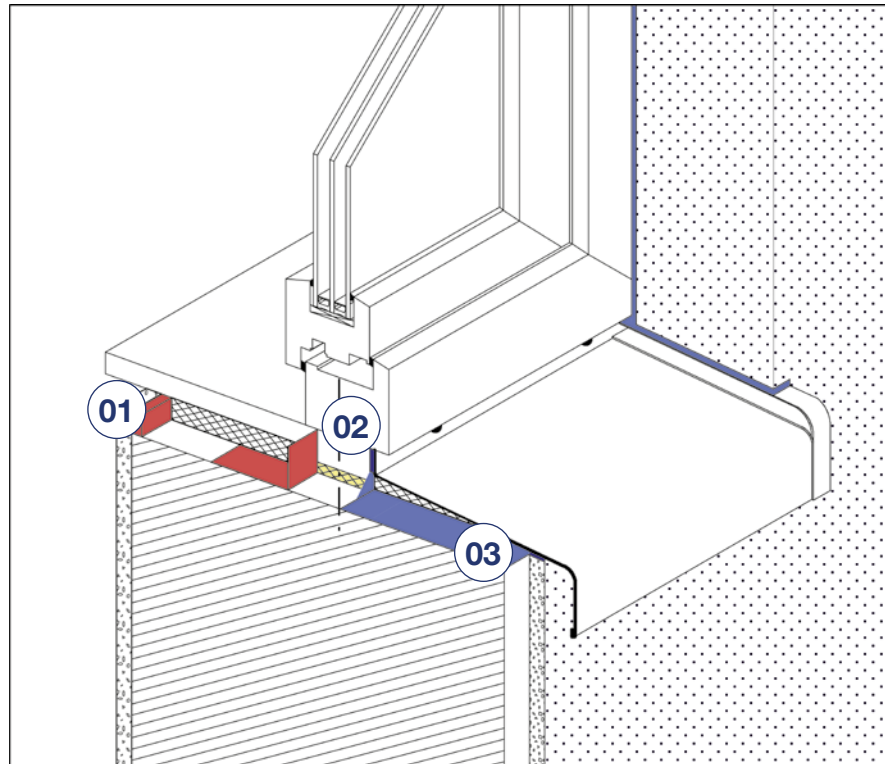
Additional product features:

- Only 1 product and only 1 assembly step for sealing all 3 levels
- blaugelb Multifunctional Tape Trio**SDL**<sup>600</sup> is equally suited for new construction and for renovation if the conditions with regard to joints are met
- For thermal insulation of buildings with ETICS systems, the blaugelb Multifunctional Tape Trio**SDL**<sup>600</sup> is ideally suited for installation in combination with the blaugelb **Trio**therm<sup>+</sup> system – for optimised isothermal characteristics
- Sealing that is open to vapour diffusion for the outer level
- Building material class B1 – difficult to ignite (according to DIN 4102)
- Joint sealing as per DIN 18355, DIN 4108, GEG
- Joint sealing compliant with RAL Leitfaden zur Planung und Ausführung der Montage von Fenstern und Haustüren für Neubau und Renovierung [Guideline for Planning and Implementation of Installation of Windows and Entry Doors for New Construction and Refurbishment]
- Manufactured under an ISO 9001/EN 29001-compliant quality system
- Tested to be low in pollutants according to EMICODE EC1 Plus, REACH-compliant
- blaugelb Multifunctional Tape Trio**SDL**<sup>600</sup> is suitable for passive houses: Joint permeability coefficient  $a \leq 0.1 \text{ m}^3 / [\text{h} \cdot \text{m}^2 (\text{daPa}) \cdot \text{h}]$
- Component inspection according to ift guideline MO-01 / 1 : 2007-01
- Verification of the wall connection hygric performance provided for permanent drying out of the joint in accordance with DIN 4108-3
- The blaugelb Multifunctional Tape Trio**SDL**<sup>600</sup> thus meets the requirements resulting from the GEG and supports heating cost savings, effective CO<sub>2</sub> reduction and climate protection



## Adapted to the 3-level model of the connecting joint

- 01** Level 1 – inside:  
**Separation of indoor and outdoor climates**
- 02** Level 2 – middle:  
**Thermal insulation and sound insulation**
- 03** Level 3 – outside:  
**Climate and weather protection**



The design of the blaugelb Multifunctional Tape Trio**SDL**<sup>600</sup> is ideally adapted to the three levels.

The tape is made of a special PU foam with waterproofing. The different colours of the tape sides clearly show the mounting direction: the grey side points to the room interior.

The blaugelb Multifunctional Tape Trio**SDL**<sup>600</sup> ensures the airtightness of the joint on the inner level that is required by standards. The effective separation of the indoor climate from the middle and outer level of the joint prevents moisture from entering the centre of the joint. The dreaded occurrence of condensation and thus also the formation of mould is hereby avoided.

In centre of the joint, the blaugelb Multifunctional Tape Trio**SDL**<sup>600</sup> is responsible for the sound and thermal insulation.

The water vapour can escape towards the outside; the joint remains permanently dry.

## Efficient processing

From the procurement to the assembly, the processing of the sealing products is designed to be efficient and inexpensive – with consistently high quality and permanently safe function.

The further processing of subsequent work should not be delayed, e.g. due to waiting times that are required for drying or curing.

Assembly teams should be able to process the products as quickly and easily as possible.

The blaugelb Multifunctional Tape TrioSDL<sup>600</sup> meets the requirements for processing and assembly for sealing the connecting joints of windows and doors in a number of ways:

- Only one product for the sealing of all three levels of the connecting joint – saves time and money
- Assembly possible irrespective of the weather
- A larger joint width can be sealed with one tape dimension – more safety with joint tolerances
- High pre-compression for simple installation and high resilience
- Inside marked grey for quick recognition of the installation position
- Easy assembly thanks to strong self-adhesion
- Subsequent work can be performed soon after the assembly is completed
- The long-term function has been verified in extensive tests



## Safety, functionality and creative freedom

Planners and architects can implement versatile design concepts with the blaugelb Multifunctional Tape Trio**SDL**<sup>600</sup>, whether in property construction, private homes, new and old buildings.

The tape can be plastered, painted and bonded over using suitable products. This is not always necessary, however: due to its high-quality properties (meeting the criteria for the stress group BG 1 and BG R in accordance with DIN 18542:2020-04), it can also be fully exposed to weather without plastering.

The design of the blaugelb Multifunctional Tape Trio**SDL**<sup>600</sup> has a grey side. This light grey side always points toward the inside of the room – the tape is thus also suitable for use in modern exposed concrete walls.

The functional characteristics of the blaugelb Multifunctional Tape Trio**SDL**<sup>600</sup> underwent rigorous tests, performed by the ift Rosenheim, among others, and the production is subject to strict quality controls in accordance with ISO 9001/EN 29001.

The blaugelb Multifunctional Tape Trio**SDL**<sup>600</sup> meets the requirements for planning for sealing the connecting joints of windows and doors in five different ways:

- Complies with the RAL guideline on installation (new version from 2020)
- Concealed or visible installation
- Enables aesthetic joint formation for a modern design
- For sustainable construction and efficient climate protection, EMICODE EC1-Plus certified
- Suitable for the passive house standard and DGNB property certification



### Large functional areas of the blaugelb Multifunctional Tape TrioSDL<sup>600</sup>

Large functional areas (joint widths) and strong pre-compression also ensure a functional 3-level sealing and insulation with common construction tolerances. The blaugelb Multifunctional Tape TrioSDL<sup>600</sup> can be used flexibly and adapts perfectly.

The airtightness and watertightness is tested and guaranteed in accordance with the strict standards of DIN 18542.

Joint width
6 – 15 mm
10 – 20 mm
15 – 30 mm
Multifunctional Tape TrioSDL <sup>600</sup>

### Large roll lengths of the blaugelb Multifunctional Tape TrioSDL<sup>600</sup>

The rolls of the blaugelb Multifunctional Tape TrioSDL<sup>600</sup> are designed for the highest efficiency while processing. This has a number of advantages in the processing due to higher tape length utilisation and less waste.

The **optimised roll length** guarantees a **high tape length efficiency**.

Roll length
8 m
12 m
15 m
Multifunctional Tape TrioSDL <sup>600</sup>

## blaugelb Triotherm<sup>+</sup> Pre-Wall Installation System

Components in the window fitting system range **certified for passive houses**.

At a time when awareness of our environment and how we manage it is increasingly becoming a central issue and when directives are becoming increasingly complex, in every building project energy-efficient construction needs to be examined with the utmost scrutiny to obtain a convincing final outcome.

Placing windows into the insulation base and therefore integrating them directly into the cladding system represents a major step towards energy efficiency in window design.

With the blaugelb Triotherm<sup>+</sup> Pre-Wall Installation System, this can be achieved without much cost or effort and without restricting the planning or further execution – now also as components in the window fitting system range certified for passive houses.



\* For more information, scan the code

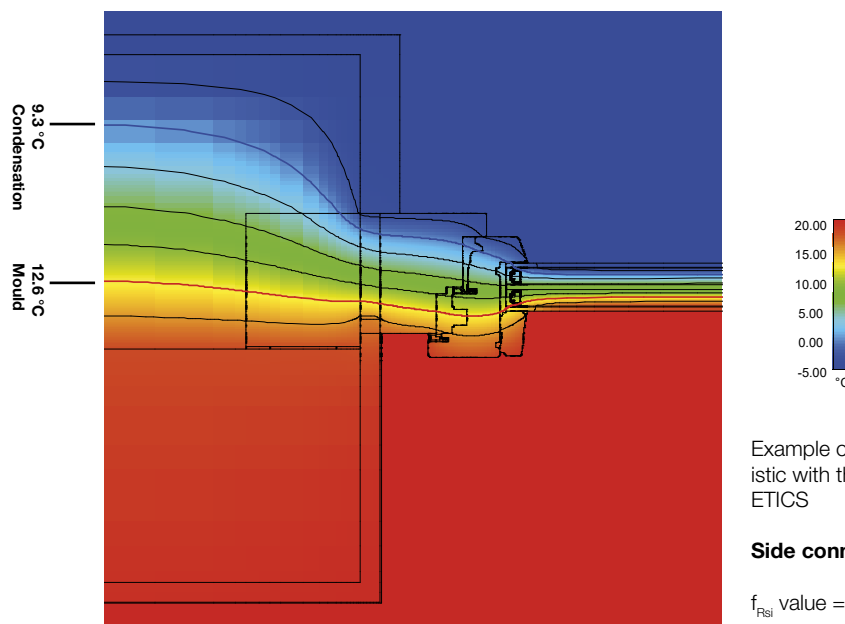
More information also at  
[www.blaugelb.de](http://www.blaugelb.de)

## Compatible with the blaugelb systems

The blaugelb Multifunctional Tape TrioSDL<sup>600</sup> is ideal for use in ETICS insulated properties in combination with the blaugelb Triotherm<sup>+</sup> system.

Thanks to its composition, the blaugelb Triotherm+ Profile has exact, fixed and level joint flanks so that the assembly of the blaugelb Multifunctional Tape TrioSDL<sup>600</sup> can be performed safely, quickly and reliably.

This leads to technical and economical advantages in the insulation and sealing of the building. Thermal bridges are reduced to a minimum in the anchoring and sealing level of the construction elements.



Example of an optimised isothermal characteristic with the blaugelb Triotherm<sup>+</sup> system and ETICS

### Side connection

f<sub>Rsi</sub> value = 0.87

The tape can also unveil its fully potential in the other blaugelb systems as well.

The blaugelb Multifunctional Tape TrioSDL<sup>600</sup> is thus ideally suited for sealing in the blaugelb Protect fastening system for the installation of fall-arresting and burglary-resistant elements. The spacer chucks typically used laterally here can be dispensed with, without risking losses of support capacity – perfect conditions for sealing with the blaugelb Multifunctional Tape TrioSDL<sup>600</sup>.

The blaugelb Multifunctional Tape TrioSDL<sup>600</sup> is also ideal for lateral and upper sealing in the base area in combination with the blaugelb All-in-One Connection System or the blaugelb Threshold System

TBS, as neither blaugelb system limits the sealing. The tape is thus also the perfect choice here in order to achieve professional and compliant sealing.

The comprehensively tested blaugelb systems offer not only high quality and functionality, but also tested safety. The used blaugelb products are perfectly coordinated here.

You can also take a detailed look at the systems mentioned in our 3D showroom at [www.hochzwei.me](http://www.hochzwei.me).

We are looking forward to your visit.

Visiting our 3D showroom?  
[www.hochzwei.me](http://www.hochzwei.me)

## Sustainability and health

When it comes to blaugelb products and systems, we ensure that they are free of pollutants as possible. The blaugelb Multifunctional Tape Trio**SDL**<sup>600</sup> itself has extremely low pollutant emissions, which is tested in accordance with the EMICODE EC1 Plus standard. This is also true for the blaugelb Trio**therm**<sup>+</sup> Profile with which it can be combined.

The products with the EMICODE stamp are tested with regard to their emission behaviour by the Gemeinschaft Emissionskontrollierte Verlegewerkstoffe, Klebstoffe und Bauprodukte e.V. (Association for Emission-controlled Installation Materials, GEV) using an independent analytical laboratory in accordance with a scientifically standardised test method.

Certifications in accordance with stricter ecological standards are gaining in importance in the construction sector. The goal here is to reduce the ecological footprint and keep it as small as possible.

Because the blaugelb Trio**therm**<sup>+</sup> system and the blaugelb Multifunctional Tape Trio**SDL**<sup>600</sup> are reversible, free of pollutants and recyclable, sustainability and environmental friendliness are guaranteed – an important point for many builder-owners and for the use in DGNB-certified properties.

Thanks to the good sealing and insulating effect, the blaugelb Multifunctional Tape Trio**SDL**<sup>600</sup> supports energy conservation, thereby effectively contributing to sustainability.

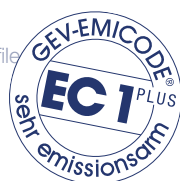
It also ensures a dry joint and thus prevents the formation of mould. This protects the health of the inhabitants.

Functionality, energy conservation, environmental protection and health protection go hand in hand with the products and systems from blaugelb.



### EMICODE-certified products from blaugelb

- blaugelb Multifunctional Tape Trio**SDL**<sup>600</sup>
- blaugelb Multifunctional Tape Trio**SDL**<sup>750</sup>
- blaugelb Joint Sealing Tape 600 BG 1
- blaugelb Joint Sealing Tape 300 BG 2
- blaugelb Foil Duo**SL**<sup>1050</sup> Power Plus
- blaugelb Foil Inside **SL**<sup>1050</sup> Power Plus
- blaugelb Foil Outside **SL**<sup>1050</sup> Power One
- blaugelb Foil Basic Inside
- blaugelb Foil Basic Outside
- blaugelb Silicone Alkoxy
- blaugelb Hybrid Polymer Power Fix
- blaugelb RC Adhesive
- blaugelb 1C Gun Foam Premium Allseason XXL
- blaugelb 1C Gun Foam XXL
- blaugelb 2C Assembly Foam Easysystem
- blaugelb 1C Gun Foam B2
- blaugelb Trio**therm**<sup>+</sup> profile
- blaugelb Insulation Panel
- blaugelb Insulation Panel MultiPro
- blaugelb Plinth Thermal Insulation Profile
- blaugelb Insulation Sill Profile
- blaugelb Insulation Wedge EPS



Because responsibility is not just a word

Not only our products, but also we, as the Meesenburg Group, are taking responsibility.

We are already supporting sustainable thinking and actions in many areas and also rigorously implementing this.

**We care**  
Social Responsibility



## blaugelb Multifunctional Tape TrioSDL<sup>600</sup>

The blaugelb Multifunctional Tape TrioSDL<sup>600</sup> is a pre-compressed 3-level sealing tape based on a special impregnated PU foam.

Due to its special properties, it is used for sealing of the three levels of connecting and expansion joints for windows and doors. The year-round drying of the joint according to EnEV and DIN 4108-3 is ensured here and confirmed by the ift Rosenheim Institute. The permanent functional capacity was verified in a component inspection according to ift guideline MO-01 / 1 : 2007-01. The assembly can be performed irrespective of the weather. Because the sealing of the joint with blaugelb multifunctional tape TrioSDL<sup>600</sup> only requires one step, it offers considerable potential savings in terms of the money and time required for the sealing.

### Product benefits:

- Only 1 product and only 1 assembly step for sealing all 3 levels
- Sealing that is watertight against driving rain over 600 Pa and open to vapour diffusion for the outer level
- Sound and thermal insulation in the centre level
- Airtight and forms a barrier against vapour in the inner level according to BG R
- Component inspection according to ift guideline MO-01 / 1 : 2007-01
- BG 1 – tested according to DIN 18542
- Moisture and temperature-resistant
- Simple and fast handling with a self-adhesive strip, saves time and money
- High adhesive strength of the self-adhesive on the standard construction window and door profiles\*
- Flexible, absorbs component movements
- High resilience, different joint widths are covered with a few tape dimensions
- Assembly possible irrespective of the weather
- Building material class B1 – difficult to ignite (according to DIN 4102)
- Joint sealing as per EnEV, DIN 18355
- Joint sealing compliant with Leitfaden zur Planung und Ausführung der Montage von Fenstern und Haustüren für Neubau und Renovierung [Guideline for Planning and Implementation of Installation of Windows and Entry Doors for New Construction and Refurbishment]
- Manufactured under an ISO 9001/EN 29001-compliant quality system
- Tested to be low in pollutants according to EMICODE EC1 Plus

\*Carry out suitable pretests.

### Technical data:

Material:	Special impregnated PU foam
Building material class: <b>DIN 4102</b>	B1 (difficult to ignite)
Stress group: <b>DIN 18542</b>	BG 1 and BG R

Watertightness against driving rain: <b>DIN EN 1027</b>	≥ 600 Pa
Joint permeability coefficient: <b>DIN EN 12114</b>	$a \leq 0.1 \text{ m}^3 / [\text{h} \cdot \text{m} \cdot (\text{daPa})]$
Thermal conductivity: <b>DIN EN 12667</b>	$\lambda = 0.048 \text{ W/m} \cdot \text{K}$
Joint sound insulation:	Up to 59 dB (joint plastered over on both sides)
Resistance to temperature changes: <b>DIN 18542</b>	From -30 °C to +80 °C
Compatibility with adjacent building materials: <b>DIN 18542</b>	Satisfied
Light and weather resistance: <b>DIN 18542</b>	Satisfied
Water vapour diffusion resistance: <b>DIN EN ISO 12572</b>	$\mu \leq 100$
sd-value:	Open to vapour diffusion
U-value with window construction depth 60 / 70 / 80 / 90 mm: <b>DIN 4108-3</b>	$U = 0.8 / 0.7 / 0.7 / 0.6 \text{ W}/(\text{m}^2 \cdot \text{K})$
Processing temperature:	+5°C to +30°C
Dimension tolerance: <b>DIN 7715 T5 P3</b>	Satisfied
Storage temperature:	At +1 °C to +20 °C
Shelf life:	12 months with dry storage in unopened original packaging, standing upright
Colour:	Anthracite, inside impregnated grey

Product name	PU	Item no.
blaugelb Multifunctional Tape TrioSDL <sup>600</sup> 30/6-15	10 x 15 m	0424606
blaugelb Multifunctional Tape TrioSDL <sup>600</sup> 35/6-15	8 x 15 m	0424607
blaugelb Multifunctional Tape TrioSDL <sup>600</sup> 40/6-15	7 x 15 m	0424608
blaugelb Multifunctional Tape TrioSDL <sup>600</sup> 54/6-15	7 x 15 m	0418782
blaugelb Multifunctional Tape TrioSDL <sup>600</sup> 64/6-15	6 x 15 m	0418785
blaugelb Multifunctional Tape TrioSDL <sup>600</sup> 74/6-15	5 x 15 m	0418786
blaugelb Multifunctional Tape TrioSDL <sup>600</sup> 84/6-15	4 x 15 m	0418787
blaugelb Multifunctional Tape TrioSDL <sup>600</sup> 30/10-20	10 x 12 m	0424609
blaugelb Multifunctional Tape TrioSDL <sup>600</sup> 35/10-20	8 x 12 m	0424610
blaugelb Multifunctional Tape TrioSDL <sup>600</sup> 40/10-20	7 x 12 m	0424611
blaugelb Multifunctional Tape TrioSDL <sup>600</sup> 54/10-20	7 x 12 m	0418788
blaugelb Multifunctional Tape TrioSDL <sup>600</sup> 64/10-20	6 x 12 m	0418789
blaugelb Multifunctional Tape TrioSDL <sup>600</sup> 74/10-20	5 x 12 m	0418790
blaugelb Multifunctional Tape TrioSDL <sup>600</sup> 84/10-20	4 x 12 m	0418791
blaugelb Multifunctional Tape TrioSDL <sup>600</sup> 54/15-30	7 x 8 m	0418821
blaugelb Multifunctional Tape TrioSDL <sup>600</sup> 64/15-30	6 x 8 m	0418822
blaugelb Multifunctional Tape TrioSDL <sup>600</sup> 74/15-30	5 x 8 m	0418823
blaugelb Multifunctional Tape TrioSDL <sup>600</sup> 84/15-30	4 x 8 m	0418824

**ANSBACH**



Meesenburg Großhandel KG  
Schalkhäuser Straße 110 | 91522 Ansbach  
Tel.: +49 981 46113-0  
Fax: +49 981 46113-30  
ansbach@meeseenburg.de

**BERLIN**



Meesenburg Großhandel KG  
Köpenicker Straße 26-29 | 10997 Berlin  
Tel.: +49 30 257620-0  
Fax: +49 30 257620-1000  
berlin@meeseenburg.de

**BISCHOFSWERDA**



Meesenburg Großhandel KG  
Bahnhofstraße 22 | 01877 Bischofswerda  
Tel.: +49 3594 7712-6020  
Fax: +49 3594 7712-6001  
fachmarkt.bischofswerda@meeseenburg.de

**DETMOLD**



Meesenburg Großhandel KG  
Niemeierstraße 18 | 32758 Detmold  
Tel.: +49 5231 6005-0  
Fax: +49 5231 6005-3901  
detmold@meeseenburg.de

**DORTMUND**



Meesenburg Großhandel KG  
Giselherstraße 3 | 44319 Dortmund  
Tel.: +49 231 9243-0  
Fax: +49 231 9243-219  
dortmund@meeseenburg.de

**DÜREN**



Meesenburg Großhandel KG  
Distelrather Straße 11 | 52353 Düren  
Tel.: +49 2421 9170-1000  
Fax: +49 2421 9170-1001  
dueren@meeseenburg.de

**ERFURT**



Meesenburg Großhandel KG  
Europaplatz 1 | 99091 Erfurt  
Tel.: +49 361 602490-0  
Fax: +49 361 602490-1001  
erfurt@meeseenburg.de

**ESSINGEN**



Mayer GmbH  
Margarete-Steiff-Str. 13 | 73457 Essingen  
Tel.: +49 7365 9206-0  
Fax: +49 7365 9206-1001  
info@beschlaege-mayer.de

**FLENSBURG**



Meesenburg Großhandel KG  
Westerallee 162 | 24941 Flensburg  
Tel.: +49 461 5808-0  
Fax: +49 461 5808-1101  
flensburg@meeseenburg.de

**GÖTTINGEN-ROSDORF**



Meesenburg Großhandel KG  
Am Flütshedamm 2 | 37124 Rosdorf  
Tel.: +49 551 693127-0  
Fax: +49 551 693127-7001  
goettingen@meeseenburg.de

**GREIFSWALD**



Meesenburg Großhandel KG  
An der Thronpost 6 | 17489 Greifswald  
Tel.: +49 3834 542-3510  
Fax: +49 3834 542-3001  
greifswald@meeseenburg.de

**GÜTERSLOH**



Meesenburg Großhandel KG  
Sandbrink 9 | 33332 Gütersloh  
Tel.: +49 5241 933-6  
Fax: +49 5241 933-7001  
guetersloh@meeseenburg.de

**HAMBURG**



Laarmann & Peez GmbH  
Hermann-Buck-Weg 11-17 | 22309 Hamburg  
Tel.: +49 40 642161-0  
Fax: +49 40 642161-2001  
info@laarmann-peeze.de

**HAMM**



Meesenburg Großhandel KG  
Östingstraße 11a | 59063 Hamm  
Tel.: +49 2381 9554-0  
Fax: +49 2381 9554-1001  
hamm@meeseenburg.de

**HEIDE**



Meesenburg Großhandel KG  
Bahnhofstraße 2b | 25746 Heide  
Tel.: +49 481 787050-0  
Fax: +49 481 787050-1001  
heide@meeseenburg.de

**KAVELSTORF**



Meesenburg Großhandel KG  
Slider Moor 7 | 18196 Kavelstorf  
Tel.: +49 38208 634-0  
Fax: +49 38208 634-14  
kavelstorf@meeseenburg.de

**KIEL**



Meesenburg Großhandel KG  
Braunstraße 11 | 24145 Kiel  
Tel.: +49 431 71038-0  
Fax: +49 431 71038-3001  
kiel@meeseenburg.de

**LEIPZIG – SCHKEUDITZ**



Meesenburg Großhandel KG  
An der Autobahn 5 | 04435 Schkeuditz  
Tel.: +49 34207 4059-0  
Fax: +49 34207 4059-1001  
leipzig@meeseenburg.de

**LÜBBECKE**



Meesenburg Großhandel KG  
Jockweg 58 | 32312 Lübbecke  
Tel.: +49 5741 3441-0  
Fax: +49 5741 3441-1001  
luebbecke@meeseenburg.de

**MAGDEBURG**



Meesenburg Großhandel KG  
Fichtestraße 29a | 39112 Magdeburg  
Tel.: +49 391 662673-0  
Fax: +49 391 662673-1001  
magdeburg@meeseenburg.de

**MAGSTADT**



Meesenburg Großhandel KG  
Zeppelinstraße 3 | 71106 Magstadt  
Tel.: +49 7159 4099-0  
Fax: +49 7159 4099-70  
magstadt@meeseenburg.de

**OLDENBURG**



Meesenburg Großhandel KG  
Ammerländer Heerstraße 260 | 26129 Oldenburg  
Tel.: +49 441 97300  
Fax: +49 441 9730-511  
oldenburg@meeseenburg.de

**OYTEN**



Meesenburg Großhandel KG  
Industriestraße 2-6 | 28876 Oyten  
Tel.: +49 4207 6668-0  
Fax: +49 4207 6668-1000  
oyten@meeseenburg.de

**RELLINGEN**



Meesenburg Großhandel KG  
Siemensstraße 19 | 25462 Rellingen  
Tel.: +49 4101 5055-0  
Fax: +49 4101 5055-1000  
rellingen@meeseenburg.de

**RHEINE**



Meesenburg Großhandel KG  
Röntgenstraße 45 | 48432 Rheine  
Tel.: +49 5971 7918-0  
Fax: +49 5971 7918-8831  
rheine@meeseenburg.de

**SANGERHAUSEN**



Meesenburg Großhandel KG  
An der Stollenmühle 1 | 06526 Sangerhausen  
Tel.: +49 3464 2743-0  
Fax: +49 3464 573489  
sangerhausen@meeseenburg.de

**SCHLESWIG**



Meesenburg Großhandel KG  
Marie-Curie-Straße 6 | 24837 Schleswig  
Tel.: +49 4621 9598-1910  
Fax: +49 4621 9598-1001  
schleswig@meeseenburg.de

**St. INGBERT**



Meesenburg Großhandel KG  
Hans-Wilhelmi-Straße 5 | 66386 St. Ingbert  
Tel.: +49 6894 31060-1090  
Fax: +49 6894 31060-1001  
st.ingbert@meeseenburg.de

**STUTTGART**



Meesenburg Großhandel KG  
Höfinger Straße 16 | 70499 Stuttgart  
Tel.: +49 711 601607-310  
Fax: +49 711 601607-3101  
stuttgart@meeseenburg.de

**WAGHÄUSEL**



Meesenburg Großhandel KG  
Goethestraße 55 | 68753 Waghäusel  
Tel.: +49 7254 95901-0  
Fax: +49 7254 95901-1001  
waghauseel@meeseenburg.de

**WOLGAST**



Meesenburg Großhandel KG  
Leeraner Straße 2 | 17438 Wolgast  
Tel.: +49 3836 2370-61  
Fax: +49 3836 2370-67  
wolgast@meeseenburg.de

LOCATION

Our local employees there for you

SPECIALIST OUTLET

Pick up your goods here directly from the specialist outlet

MEESENBURG SPECIALIST SHOP  
SAFETY & SERVICE

Safety concepts, advice and sales

CUSTOMER BRAND TEAM

Customer brand base, **no** sales or distribution activities



Expert. Honest. Reliable.

For more information, visit  
[www.blaugelb.de](http://www.blaugelb.de)