

All components as an ensemble
create the perfect system.



blaugelb system components for blaugelb Threshold TBS

The optimum complementary range for the superior added value of the blaugelb Threshold TBS.

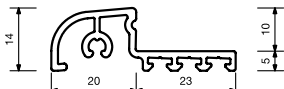
- Higher torsional rigidity of the frame thanks to the use of the blaugelb Filling Pieces
- Optimum screwing of the strike plates with the blaugelb Plinth Thermal Insulation Profiles
- Optimum connection in terms of airtightness and freedom from thermal bridges thanks to the use of blaugelb Plinth Thermal Insulation Profiles
- High load transfer
- High watertightness to driving rain
- Optimum positioning of the brushes in the lower connection is possible thanks to the large number of brush seal sockets

blaugelb Weatherboarding:

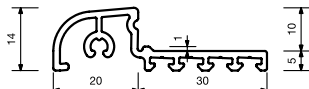
blaugelb Weatherboarding AD (outer seal) 0, I, II, III and IV and MD (middle seal) II, III, IV and V from extruded anodised aluminium EV1 (E6/C-0) suitable for a door or window element.

Thanks to its design, blaugelb Weatherboarding prevents water penetration even if there is an elevated pressure difference between outside and inside. Using blaugelb Weatherboarding on a sash profile for a door or window element acting in conjunction with a threshold element makes it possible to achieve a contactless, no-wear seal. The airflow penetrating from outside between the sash profile and the weatherboarding on the one hand and the threshold structure on the other hand is disrupted at the inner web of the weatherboarding. This reduces the inward airflow, permitting less moisture ingress. Depending on the design, blaugelb Weatherboarding systems have more than 3 to 6 seating grooves for selecting the optimum position for the blaugelb Brush Seal.

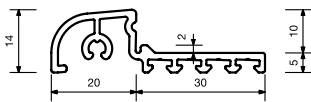
Weatherboarding AD



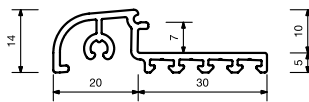
blaugelb Weatherboarding AD 0
Item no. 0416846



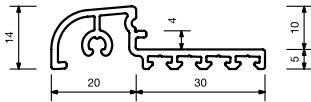
blaugelb Weatherboarding AD I
Item no. 0416847



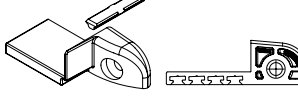
blaugelb Weatherboarding AD II
Item no. 0416848



blaugelb Weatherboarding AD III
Item no. 0416849

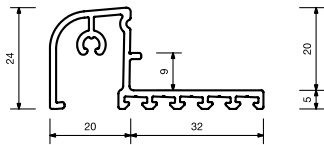


blaugelb Weatherboarding AD IV
Item no. 0416850

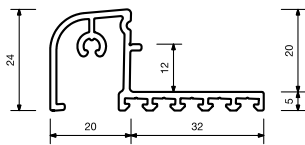


blaugelb Weatherboarding AD 0 - IV
Item no. 0416857

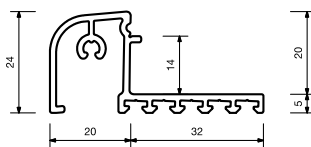
Weatherboarding MD



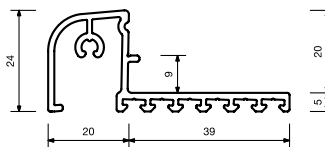
blaugelb Weatherboarding MD II
Item no. 0416851



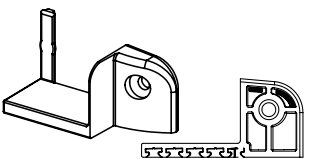
blaugelb Weatherboarding MD III
Item no. 0416852



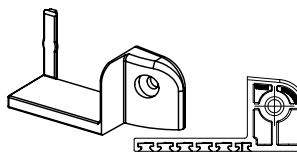
blaugelb Weatherboarding MD IV
Item no. 0416853



blaugelb Weatherboarding MD V
Item no. 0416854



blaugelb Endcap MD II - IV
Item no. 0416858



blaugelb Endcap MD V
Item no. 0416859

Product name	PU	Item no.
blaugelb Weatherboarding AD 0	6 m	0416846
blaugelb Weatherboarding AD I	6 m	0416847
blaugelb Weatherboarding AD II	6 m	0416848
blaugelb Weatherboarding AD III	6 m	0416849
blaugelb Weatherboarding AD IV	6 m	0416850
blaugelb Weatherboarding MD II	6 m	0416851
blaugelb Weatherboarding MD III	6 m	0416852
blaugelb Weatherboarding MD IV	6 m	0416853
blaugelb Weatherboarding MD V	6 m	0416854

blaugelb Endcaps:

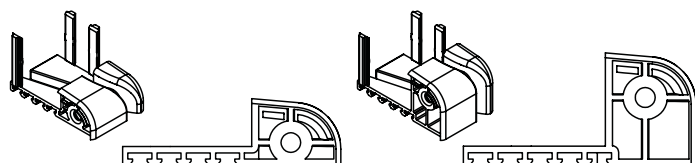
Profilsystem	Rahmen/Pfosten	Wetterschenkel								
		AD 0	AD I	AD II	AD III	AD IV	MD II	MD III	MD IV	MD V
Aluplast	Ideal 4000			X						
	Ideal 5000							X		
	Ideal 7000			X						
	Ideal 8000							X		
Gealan	S7000						X			
	S7000 IQ + 82,5						X			
	S8000		X							
	S8000 IQ + 82,5		X							
	S9000 IQ + 82,5									X
KBE	KBE 70 AD			X						
	KBE 70 MD							X		
	KBE 88+						X			
Kömmerring	Kömmerring 70 AD			X						
	Kömmerring 70 MD			X						
	Kömmerring 88+							X		
Salamander / Brüggmann	Streamline			X						
	BlueEvolution 82						X			
	BlueEvolution 92								X	
	3D								X	
Schüco	Corona CT 70 AS					X				
	Corona CT 70 MD					X				
	Corona SI 82				X					
	ThermoPlus SI 82				X					
Veka	Softline 70 AD			X						
	Softline 82 AD				X					
	Softline 82 MD				X					
Rehau	Brilliant AD 70		X							
	Geneco						X			
	Euro 86			X						
	Syneo AD						X			
	Syneo MD						X			
Profin	Profin 76 AD					X				
	Profin 76 MD							X		
Inoutic	Prestige 76				X					
	Eforte				X					
	Arcade		X							

The blaugelb Endcaps made of plastic have a design and shape that visually matches the weatherboarding, and can be optimally positioned thanks to the severable locating pins and weather-resistant stainless steel screws (A2 4x20 mm, included in delivery specification). When the sash frame construction is in transit, the endcaps do not break off if it is set down on the corners.

Product name	Colour	PU	Item no.
blaugelb Pair of Endcaps AD 0 – IV	PVC grey	50 pairs	0416857
blaugelb Pair of Endcaps MD II – IV	PVC grey	50 pairs	0416858
blaugelb Pair of Endcaps MD IV	PVC grey	50 pairs	0416859

blaugelb Sleeve Endcap Pair:

For sleeve solutions, blaugelb Sleeve Endcaps made of plastic together with the blaugelb Weatherboarding offer the perfect combination and can be ideally fastened with weather-resistant stainless steel screws (A2 4x20 mm, included in delivery specification).



Product name	Colour	PU	Item no.
blaugelb Sleeve Endcap Pair RS AD	PVC grey	50 pairs	9020685
blaugelb Sleeve Endcap Pair LS AD	PVC grey	50 pairs	9020686
blaugelb Sleeve Endcap Pair RS MD	PVC grey	50 pairs	9020687
blaugelb Sleeve Endcap Pair RS MD	PVC grey	50 pairs	9020688

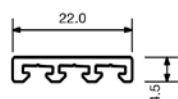
blaugelb Brush Seal:

Fits blaugelb Weatherboarding AD and MD for outstanding sealing quality and excellent comfort. Use of the blaugelb Brush Seal made from high-grade polypropylene in the weatherboarding seating groove prevents the penetration of draughts, dust, light, noise and water. The blaugelb Brush Seal is water-repellent because the grey brush bristles are silicone-treated and also fitted with a low-noise textile middle web for controlled water drainage.

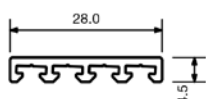
Product name	Colour	PU	Item no.
blaugelb Brush Seal silent fin 10 mm	Grey, similar to RAL 7045	100 m	0419779

blaugelb Brush Seal Profile:

The blaugelb Brush Seal Profile is suitable for using wood constructions and sleeve solutions in all frame materials and forms the perfect mounting basis for the blaugelb Brush Seal.



blaugelb Brush Seal
Profile 3F
Item no. 0416855



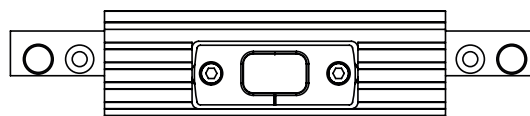
blaugelb Brush Seal
Profile 4F
Item no. 0416856

Product name	Length	PU	Item no.
blaugelb Brush Seal Profile 3F	6 m	60 m	0416855

Product name	Length	PU	Item no.
blaugelb Brush Seal Profile 4F	6 m	60 m	0416856

blaugelb Mullion Strike Plate:

The blaugelb Mullion Strike Plates made of high-quality aluminium are used for receiving the rod projections – can be used in new construction and renovation.



Product name	PU	Item no.
blaugelb Mullion Strike Plate axis 11 mm	50 pieces	0416860
blaugelb Mullion Strike Plate axis 13 mm	50 pieces	0416861
blaugelb Mullion Strike Plate axis 15 mm	50 pieces	0416862

blaugelb Mullion Set Gealan 9000:

Use of the blaugelb Brush Seal made from high-grade polypropylene in the weatherboarding seating groove prevents the penetration of draughts, dust, light, noise and water. To ensure that the blaugelb Brush Seal can also guarantee the highest protection against driving rain and optimum tightness with mullion elements in the area of the mullion, we use the blaugelb Mullion Set Gealan 9000 made of high-quality aluminium as the perfect mounting basis. The plastic adapters contained in the blaugelb Mullion Set Gealan 900 for potential rabbet compensation are included in the scope of delivery. The blaugelb Mullion Set Gealan 9000 is used to extend the blaugelb Brush Seal Profile below the mullion.

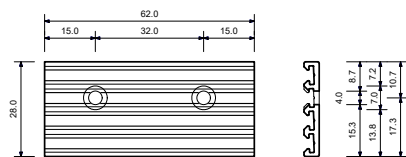
Applications:

- Mullion elements in combination with a blaugelb Threshold TBS

Product benefits:

- Disengaging of the weatherboarding below the mullion element no longer necessary
- Identical cutting of the weatherboarding possible
- Two counterbores for flush screw connection with fitting screws

blaugelb Bürstendichtungsaufnahmeprofil 4F:



Product name	Length	PU	Item no.
blaugelb Mullion Set Gealan 9000	62 mm	1 piece	0428013

blaugelb Filling Pieces:

The blaugelb Filling Pieces are available for various different profile systems in a length of 50 mm and a PU of 20 pieces. A precise profile-specific list of the articles is given in the respective technical data sheets.

blaugelb Plinth Thermal Insulation Profile PVC/EPS:

The blaugelb Plinth Thermal Insulation Profile PVC/EPS forms the perfect basis for the blaugelb Threshold System TBS. The precise specifications and product advantages are given in the respective technical data sheet.

blaugelb Plinth Thermal Insulation Profile EPS:

The blaugelb Plinth Thermal Insulation Profile EPS forms the perfect basis for the blaugelb Threshold System TBS. The precise specifications and product advantages are given in the respective data sheet.

blaugelb Building Phase Protection Profile:

The blaugelb Building Phase Protection Profile is made from 1.5 mm plastic and protects the cover and threshold against dirt, scratches and loads throughout the entire building phase. The blaugelb Building Phase Protection Profile is available in different versions for all construction depths of the blaugelb Threshold TBS.

Product name	Length	PU	Item no.
blaugelb Building Phase Protection Profile TBS 70	1.18 m	20 pieces	0416863
blaugelb Building Phase Protection Profile TBS 75	1.18 m	15 pieces	0416864
blaugelb Building Phase Protection Profile TBS 80	1.18 m	30 pieces	0416865
blaugelb Building Phase Protection Profile TBS 90	1.18 m	30 pieces	0416866
blaugelb Building Phase Protection Profile TBS 100	1.18 m	10 pieces	0416867
blaugelb Building Phase Protection Profile TBS 120	1.18 m	10 pieces	0416868