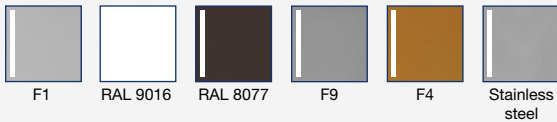




Available colours/finishes:



blaugelb knob handle set 1/2 KGT50 outside PZ92 ZA ES1

Free choice of colour versions on the inside thanks to the matching 1/2 lever handle set DGT50 inside.

- Increased safety thanks to ES1-tested core pulling protection
- High-quality materials and finishes
- Concealed screws
- Elegant appearance on the door

blaugelb knob handle set ½ KGT50 outside PZ92 ZA ES1

Free choice of colour versions on the inside thanks to the matching ½ lever handle set DGT50 inside.



Product features:

The blaugelb knob handle set ½ KGT50 outside PZ92 ZA ES1 with a plate width of 50 mm (PZ92 spacing) and ES1-tested core pulling protection is suitable for wooden, plastic and metal exterior doors. To ensure that the knob handle set can withstand any attempts to drill it open, the substrate is made of hardened steel. The knob handle set can be combined with a blaugelb ½ DGT50 inside PZ92.

The attractive, elegant blaugelb knob handle set ½ KGT50 outside PZ92 ZA ES 1 is available in various surface colours in aluminium. The set is mounted by means of concealed screws.

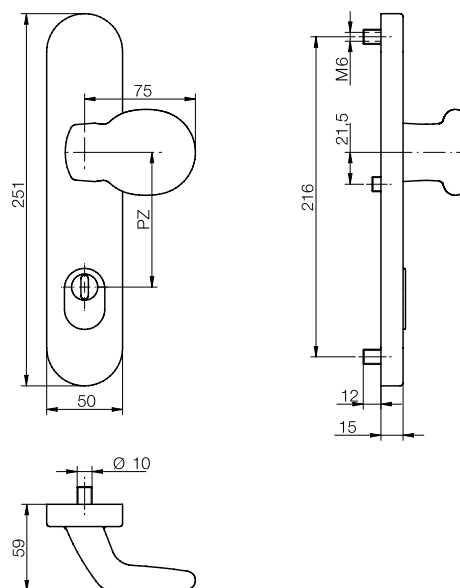
Product benefits:

- Increased safety thanks to ES1-tested core pulling protection
- High-quality materials and finishes
- Concealed screws
- Elegant appearance on the door

Technical data:

| | |
|---------------------------|--|
| Material: | Aluminium or fine matt stainless steel |
| Option: | Knob fixed, can be reversed from right-hand to left-hand |
| Lever square socket: | 8 mm |
| Plate dimensions: | 50 x 251 mm |
| Plate height: | 15 mm |
| Profile cylinder spacing: | 92 mm |
| Cylinder protrusion: | 10-14 mm |
| Stud internal diameter: | 6 mm |
| Fastening: | Concealed screws |
| Packing unit: | 1 set (without fastening set) |

| Product name | PU | Item no. |
|---|---------|----------|
| blaugelb knob handle set ½ KGT50 outside PZ92 ZA ES1 AL RAL 9016 (white) | 1 piece | 0424118 |
| blaugelb knob handle set ½ KGT50 outside PZ92 ZA ES1 AL F1 (silver) | 1 piece | 0424123 |
| blaugelb knob handle set ½ KGT50 outside PZ92 ZA ES1 AL F4 (bronze) | 1 piece | 0424128 |
| blaugelb knob handle set ½ KGT50 outside PZ92 ZA ES1 AL RAL 8077 (brown) | 1 piece | 0424134 |
| blaugelb knob handle set ½ KGT50 outside PZ92 ZA ES1 AL F9 (steel-coloured) | 1 piece | 0424139 |
| blaugelb knob handle set ½ KGT50 outside PZ92 ZA ES1 stainless steel Fine matt | 1 piece | 0424144 |



Accessories:

Fastening set for 8 mm socket:

| Product name | PU | Item no. |
|--|-------|----------|
| Fastening set KGT35/KGT50 TS 57–62 mm 1 pin 8x90 mm/3 screws M6x70 mm | 1 set | 0424176 |
| Fastening set KGT35/KGT50 TS 62–67 mm 1 pin 8x95 mm/3 screws M6x75 mm | 1 set | 0424177 |
| Fastening set KGT35/KGT50 TS 67–72 mm 1 pin 8x100 mm/3 screws M6x80 mm | 1 set | 0424178 |
| Fastening set KGT35/KGT50 TS 72–77 mm 1 pin 8x105 mm/3 screws M6x85 mm | 1 set | 0424179 |
| Fastening set KGT35/KGT50 TS 77–82 mm 1 pin 8x110 mm/3 screws M6x90 mm | 1 set | 0424180 |
| Fastening set KGT35/KGT50 TS 82–87 mm 1 pin 8x115 mm/3 screws M6x95 mm | 1 set | 0424181 |
| Fastening set KGT35/KGT50 TS 87–92 mm 1 pin 8x120 mm/3 screws M6x100 mm | 1 set | 0424182 |

Fastening set for 10 mm socket:

| Product name | PU | Item no. |
|---|-------|----------|
| Fastening set KGT35/KGT50 N10 TS 57–62 mm 1 pin 8/10x90 mm/3 screws M6x70 mm | 1 set | 0424190 |
| Fastening set KGT35/KGT50 N10 TS 62–67 mm 1 pin 8/10x95 mm/3 screws M6x75 mm | 1 set | 0424191 |
| Fastening set KGT35/KGT50 N10 TS 67–72 mm 1 pin 8/10x100 mm/3 screws M6x80 mm | 1 set | 0424193 |
| Fastening set KGT35/KGT50 N10 TS 72–77 mm 1 pin 8/10x105 mm/3 screws M6x85 mm | 1 set | 0424194 |
| Fastening set KGT35/KGT50 N10 TS 77–82 mm 1 pin 8/10x110 mm/3 screws M6x90 mm | 1 set | 0424195 |
| Fastening set KGT35/KGT50 N10 TS 82–87 mm 1 pin 8/10x115 mm/3 screws M6x95 mm | 1 set | 0424196 |
| Fastening set KGT35/KGT50 N10 TS 87–92 mm 1 pin 8/10x120 mm/3 screws M6x100 mm | 1 set | 0424197 |

The information provided in this document corresponds to the information and technical details available to the best of our knowledge. However, this does not constitute a guarantee pursuant to section 443 of the German Civil Code (BGB). Our processing instructions are to be considered only as general guidelines and may differ in the individual case due to the range of possible uses and applications. They do not therefore automatically exempt the user from carrying out their own tests. We reserve the right to make technical modifications and enhancements at any time.