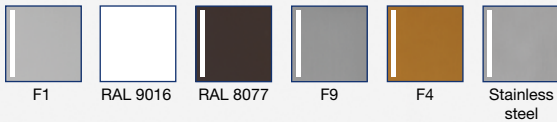


Available colours/finishes:



blaugelb knob handle set 1/2 KGT50 outside PZ92

Free choice of colour versions on the inside thanks to the matching 1/2 lever handle set DGT50 inside.

- **High-quality materials and finishes**
- **Concealed screws**
- **Elegant appearance on the door**

blaugelb knob handle set ½ KGT50 outside PZ92

Free choice of colour versions on the inside thanks to the matching ½ lever handle set DGT50 inside.



Product features:

The blaugelb knob handle set ½ KGT50 outside PZ92 with a plate width of 50 mm (PZ92 spacing) is suitable for wooden, plastic and metal exterior doors. The set can be combined with a blaugelb ½ DGT50 inside PZ92.

The attractive, elegant blaugelb knob handle set ½ KGT50 outside PZ92 is available in various surface colours in aluminium, and in fine matt stainless steel. The set is mounted by means of concealed screws.

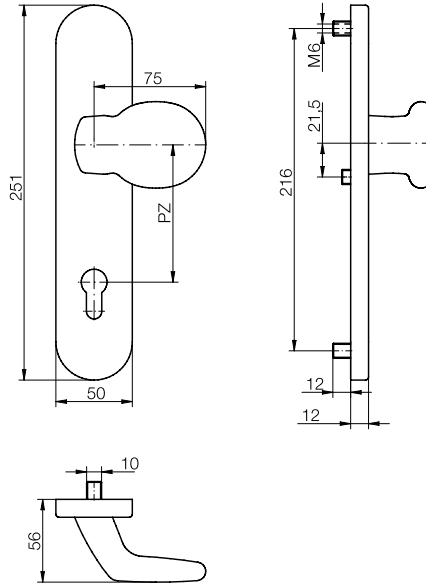
Product benefits:

- High-quality materials and finishes
- Concealed screws
- Elegant appearance on the door

Technical data:

Material:	Aluminium or fine matt stainless steel
Option:	Knob fixed, can be reversed from right-hand to left-hand
Lever square socket:	8 mm
Plate dimensions:	50 x 251 mm
Plate height:	12 mm
Profile cylinder spacing:	92 mm
Stud internal diameter:	6 mm
Fastening:	Concealed screws
Packing unit:	1 set (without fastening set)

Product name	PU	Item no.
blaugelb knob handle set ½ KGT50 outside PZ92 AL RAL 9016 (white)	1 piece	0424117
blaugelb knob handle set ½ KGT50 outside PZ92 AL F1 (silver)	1 piece	0424122
blaugelb knob handle set ½ KGT50 outside PZ92 AL F4 (bronze)	1 piece	0424127
blaugelb knob handle set ½ KGT50 outside PZ92 AL RAL 8077 (brown)	1 piece	0424133
blaugelb knob handle set ½ KGT50 outside PZ92 AL F9 (steel-coloured)	1 piece	0424138
blaugelb knob handle set ½ KGT50 outside PZ92 stainless steel Fine matt	1 piece	0424143



Accessories:

Fastening set for 8 mm socket:

Product name	PU	Item no.
Fastening set KGT35/KGT50 TS 57–62 mm 1 pin 8x90 mm/3 screws M6x70 mm	1 set	0424176
Fastening set KGT35/KGT50 TS 62–67 mm 1 pin 8x95 mm/3 screws M6x75 mm	1 set	0424177
Fastening set KGT35/KGT50 TS 67–72 mm 1 pin 8x100 mm/3 screws M6x80 mm	1 set	0424178
Fastening set KGT35/KGT50 TS 72–77 mm 1 pin 8x105 mm/3 screws M6x85 mm	1 set	0424179
Fastening set KGT35/KGT50 TS 77–82 mm 1 pin 8x110 mm/3 screws M6x90 mm	1 set	0424180
Fastening set KGT35/KGT50 TS 82–87 mm 1 pin 8x115 mm/3 screws M6x95 mm	1 set	0424181
Fastening set KGT35/KGT50 TS 87–92 mm 1 pin 8x120 mm/3 screws M6x100 mm	1 set	0424182

Fastening set for 10 mm socket:

Product name	PU	Item no.
Fastening set KGT35/KGT50 N10 TS 57–62 mm 1 pin 8/10x90 mm/3 screws M6x70 mm	1 set	0424190
Fastening set KGT35/KGT50 N10 TS 62–67 mm 1 pin 8/10x95 mm/3 screws M6x75 mm	1 set	0424191
Fastening set KGT35/KGT50 N10 TS 67–72 mm 1 pin 8/10x100 mm/3 screws M6x80 mm	1 set	0424193
Fastening set KGT35/KGT50 N10 TS 72–77 mm 1 pin 8/10x105 mm/3 screws M6x85 mm	1 set	0424194
Fastening set KGT35/KGT50 N10 TS 77–82 mm 1 pin 8/10x110 mm/3 screws M6x90 mm	1 set	0424195
Fastening set KGT35/KGT50 N10 TS 82–87 mm 1 pin 8/10x115 mm/3 screws M6x95 mm	1 set	0424196
Fastening set KGT35/KGT50 N10 TS 87–92 mm 1 pin 8/10x120 mm/3 screws M6x100 mm	1 set	0424197