



blaugelb Mortise locks
for better protection on your doors.

3 M 9 0 0 F 2 B A 2 0



blaugelb Mortise lock 1433 PZW

Suitable for tubular frame doors - prepared for profile cylinders.

- Classification according to DIN EN 12209:2004-03
- Enclosed lock case
- Fully galvanised

Product features:

The blaugelb Mortise lock 1433 PZW is suitable for tubular frame doors and prepared for profile cylinders, spacing 92. The lock case is closed to the top and bottom, features continuous screw-holes, and has a single-part 8 mm follower with rod and a backset of 20 mm. The 24 mm faceplate of the blaugelb Mortise lock 1433 PZW is in stainless steel, while the latch and deadbolt are nickel-plated. The deadbolt is single-turn with a throw of 13 mm.

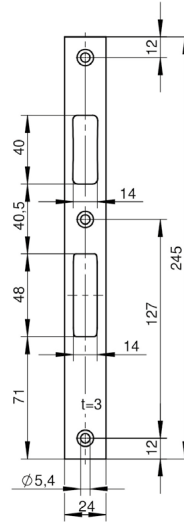
Product benefits:

- Classification according to DIN EN 12209:2004-03
- Enclosed lock case
- Fully galvanised

Technical data:

Material:	Steel, fully galvanised
Faceplate material:	Stainless steel
Latch and deadbolt material:	Nickel plated
Version:	PZ
Backset:	20 mm
Faceplate width:	24 mm
Distance:	92 mm
Follower:	8 mm
Deadbolt:	Single-turn
Classification code DIN EN 12209:	3 M 9 0 0 F 2 B A 2 0
Packing unit:	1 piece

Product name	PU	Item no.
blaugelb Mortise lock 1433 PZW 24/20/8 PZ92	1 piece	0390912
blaugelb Strike plate 24x3x245 mm stainless steel for DIN L and R	1 piece	0433235



The 24x3x245 mm strike plate in stainless steel is a complementary part to the blaugelb Mortise lock 1438 PZW or 1433 PZW.

It can be used for DIN Left and DIN Right.

